



# Indicadores de gestión

## Pagos y Cobros

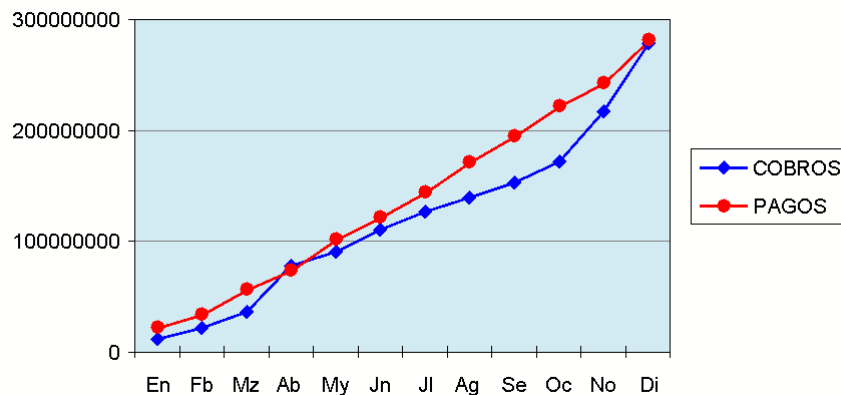
Ejercicio 2009

jueves, 25 de marzo de 2010

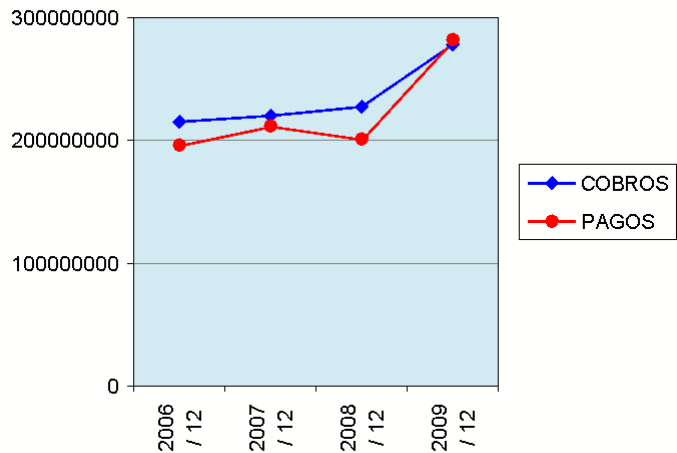
Evolución hasta 12/ 2009

Ver Magnitudes

	COBROS	PAGOS
En	11.372.487,63	22.429.540,02
Fb	22.082.382,30	34.361.218,03
Mr	35.957.018,98	56.799.676,22
Ab	78.208.265,99	74.480.464,26
My	90.419.962,45	101.734.620,28
Jn	110.459.988,19	122.179.888,28
Jl	126.545.772,31	144.792.747,99
Ag	139.159.672,81	171.456.672,40
Se	153.056.503,81	194.894.700,98
Oc	171.421.163,77	222.715.018,77
No	216.447.678,06	243.371.179,14
Di	278.282.973,06	282.272.879,23



Evolución últimos ejercicios



	COBROS	PAGOS
2006 / 12	215.042.881,80	196.020.388,06
2007 / 12	220.087.049,24	212.099.509,20
2008 / 12	227.697.907,67	201.272.175,95
2009 / 12	278.282.973,06	282.272.879,23